

HVAC Connection Equipments

PRODUCT RANGE



LINKUP
BY KLAVUZ METAL

www.klavuzmetal.com

www.link-up.com.tr

ABOUT US

Klavuz Metal was established in 1996 and has a rich accumulation of knowledge. With the experience derived from knowledge and accumulation, it aims to provide a better quality service to you, our customers.

With its strong and dynamic structure, it has adopted the principle of producing lasting solutions to your problems in a short time and offering quality products at affordable prices in today's market conditions.

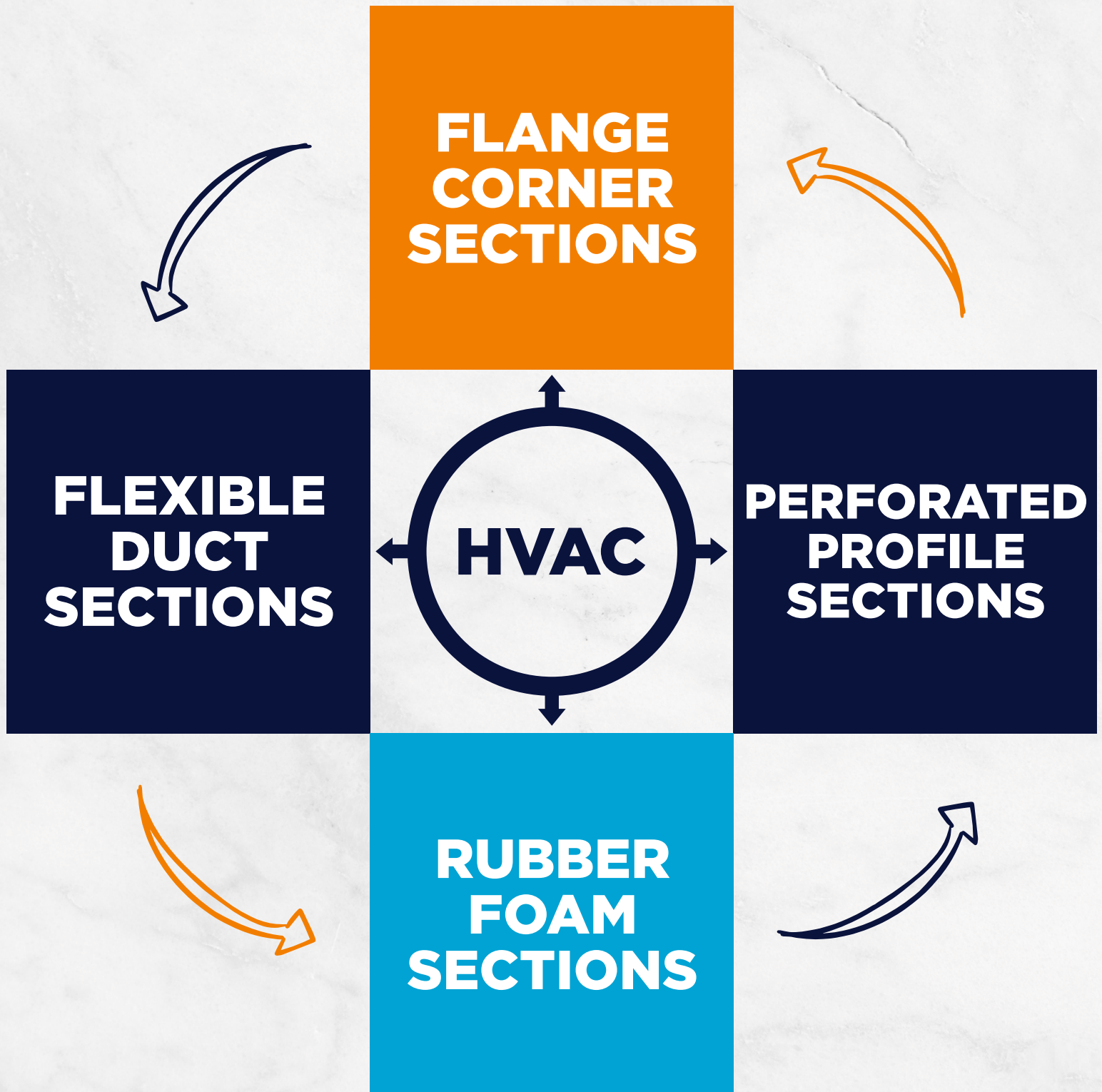
We are working successfully with our mission always aiming to develop and our innovative vision. We plan to continue our successful activities in the sector without compromising our principles in the future.

We strengthened the ventilation şanges of Klavuz Metal with a new technique, and increased their sealing with the butyl mastic we used. In this way, we have shown the end user that we are environmentally friendly by saving energy. All of these save both time and expense during the installation process.

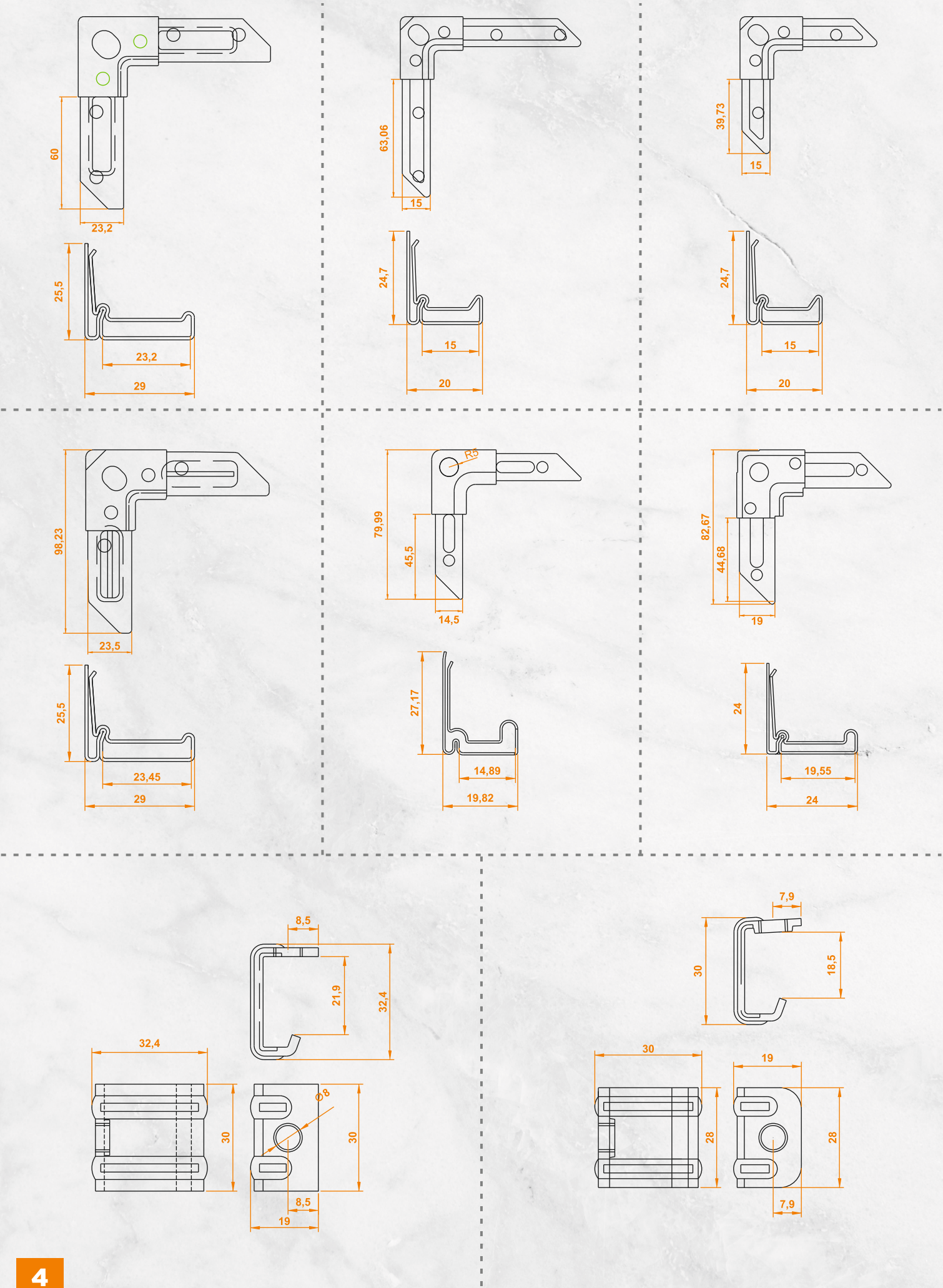
**HIGH
QUALITY**

**MADE IN
TÜRKİYE**
DISCOVER THE POTENTIAL

INNOVATION



TECHNICAL DETAIL

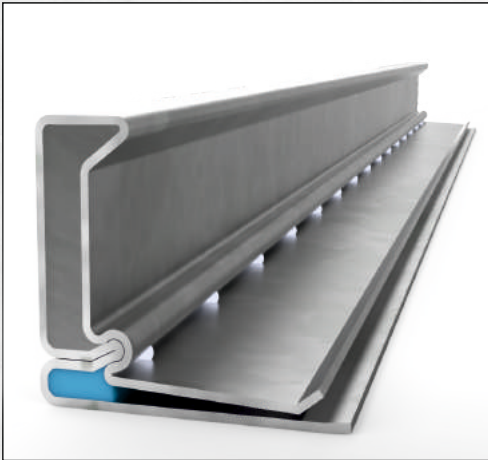


| | |
|---------------------------------|----|
| - ABOUT US | 2 |
| - HVAC COMPONENTS | 3 |
| - TECHNICAL DETAIL | 4 |
| - CONTENTS | 5 |
| - FLANGE | 6 |
| - CORNER | 7 |
| - PERFORATED L PROFILE | 8 |
| - PERFORATED U PROFILE | 9 |
| - DRILL SCREW NUTS BOLD | 10 |
| - DUCT CONNECTION | 11 |
| - GASKET TAPE | 12 |
| - TAPE | 13 |
| - AIR DUCT SEALANT - SILIKONES | 14 |
| - AIR DUCT SEALANT - SILIKONES | 15 |
| - FLEXIBLE DUCT | 16 |
| - FLEXIBLE DUCT | 17 |
| - FLEXIBLE DUCT CONNECTOR | 18 |
| - FLEXIBLE DUCT CONNECTOR | 19 |
| - ELASTOMERIC RUBBER FOAM | 20 |
| - MOUNTING INSTRUCTION | 21 |
| - MOUNTING INSTRUCTION | 22 |
| - TENSILE AND CHEMICAL ANALYSIS | 23 |
| TEST RESULTS | |

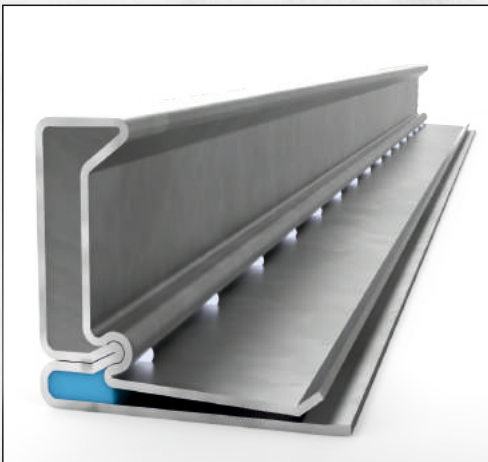
FLANGE

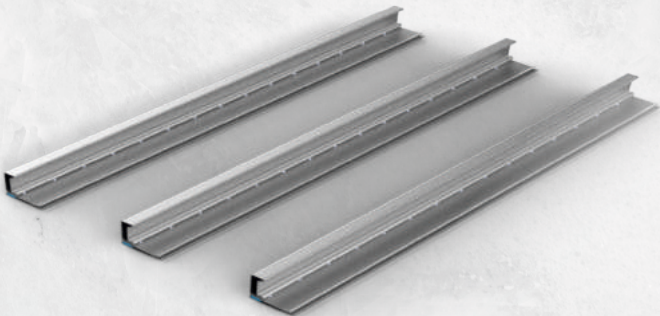
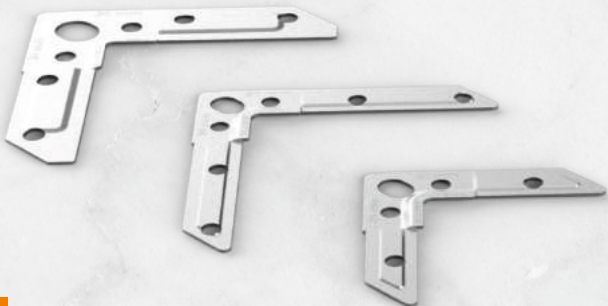
- High torsion rigidity through clinching
- Flange and corner build an extrem rigid unit
- Manufactured Flanges with integrated Butyl-sealant suitable for air-tightness
- Butyl-sealant

FLANGE WITH BUTYL - SEALANT

|  | Description | Material | Length | Packet | Thickness |
|---|--------------------------|------------|-----------------|--------------|-------------|
| | LINKUP 20MM FLANGE BUTYL | Galvanized | 2.000 - 5.000mm | 500 - 1.000m | 0,5 - 0,6mm |
| | LINKUP 25MM FLANGE BUTYL | Galvanized | 2.000 - 5.000mm | 500 - 1.000m | 0,5 - 0,6mm |
| | LINKUP 30MM FLANGE BUTYL | Galvanized | 2.000 - 5.000mm | 500 - 1.000m | 0,6 - 0,7mm |

FLANGE WITH BUTYL - SEALANT

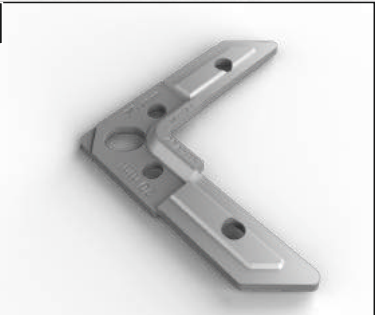
|  | Description | Material | Length | Packet | Thickness |
|--|--------------------------|------------|-----------------|--------------|-----------|
| | LINKUP 20MM FLANGE BUTYL | Galvanized | 2.000 - 5.000mm | 500 - 1.000m | 0,7mm |
| | LINKUP 30MM FLANGE BUTYL | Galvanized | 2.000 - 5.000mm | 500 - 1.000m | 0,8mm |



CORNER 20

Suitable for flange systems

| Description | Material | Thickness | Pallet |
|---------------|----------------------|-----------|---------------------|
| LINKUP CORNER | Galvanized Stainless | 2mm | 25.000 - 50.000 Pcs |
| LINKUP CORNER | Galvanized Stainless | 2,5mm | 25.000 - 50.000 Pcs |
| LINKUP CORNER | Galvanized Stainless | 3mm | 25.000 - 50.000 Pcs |

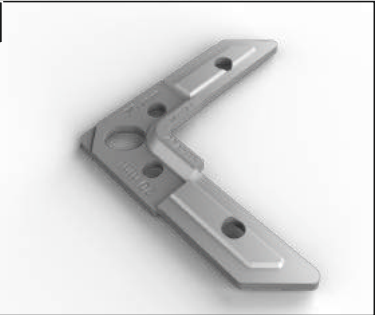


CORNER 25

Suitable for Flange systems

Clearance 32mm

| Description | Material | Packet | Thickness | Pallet |
|---------------|------------|---------|-----------|---------------------|
| LINKUP CORNER | Galvanized | 500 Pcs | 2mm | 25.000 - 50.000 Pcs |
| LINKUP CORNER | Galvanized | 500 Pcs | 2,5mm | 25.000 - 50.000 Pcs |



CORNER 30

Suitable for flange systems

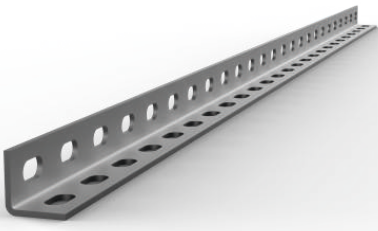
| Description | Material | Packet | Thickness | Pallet |
|---------------|------------|---------|-----------|------------|
| LINKUP CORNER | Galvanized | 250 Pcs | 2mm | 12.000 Pcs |
| LINKUP CORNER | Galvanized | 250 Pcs | 2,5mm | 12.000 Pcs |
| LINKUP CORNER | Galvanized | 250 Pcs | 3mm | 12.000 Pcs |

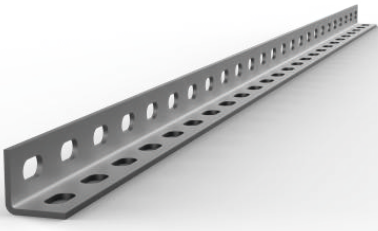


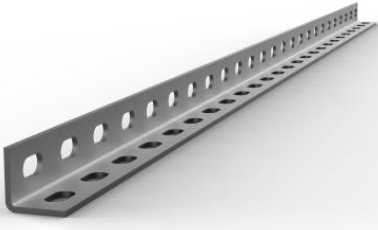
PERFORATED L PROFILE


L Perforated Profile

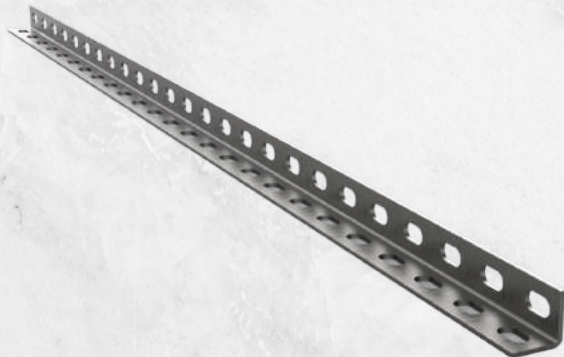
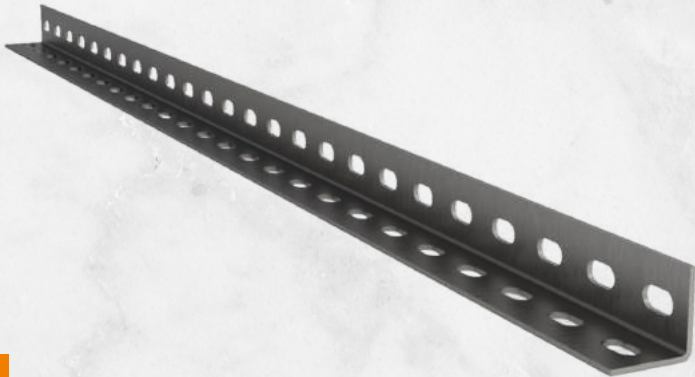
Suitable For Flange Systems

|  | Description | Materiaial | Thickness |
|---|----------------------------|----------------------|-----------|
| | 30x30 L Perforated Profile | Galvanized Stainless | 2mm |
| | | | 2,5mm |
| | | | 3mm |

|  | Description | Materiaial | Thickness |
|--|----------------------------|----------------------|-----------|
| | 40x40 L Perforated Profile | Galvanized Stainless | 2mm |
| | | | 2,5mm |
| | | | 3mm |
| | | | 4mm |

|  | Description | Materiaial | Thickness |
|---|----------------------------|----------------------|-----------|
| | 50x50 L Perforated Profile | Galvanized Stainless | 2mm |
| | | | 2,5mm |
| | | | 3mm |
| | | | 4mm |

|  | Description | Materiaial | Thickness |
|---|----------------------------|----------------------|---------------|
| | 30x18 C Perforated Profile | Galvanized Stainless | 1 - 1,25mm |
| | 28x30 C Perforated Profile | | 1,50 - 1,75mm |
| | 38x40 C Perforated Profile | | 1,75 - 2,00mm |



U Perforated Profile

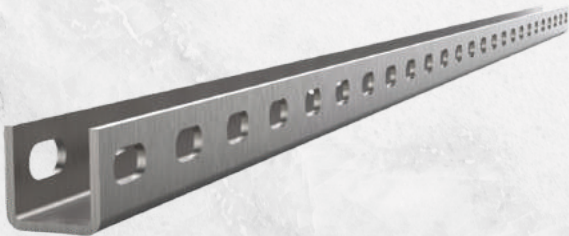
Suitable For Flange Systems

| Description | Materiaial | Thickness |  |
|----------------------------|----------------------|-----------|---|
| 30x30 U Perforated Profile | Galvanized Stainless | 2mm | |
| | | 2,5mm | |
| | | 3mm | |

| Description | Materiaial | Thickness |  |
|----------------------------|----------------------|-----------|--|
| 40x40 U Perforated Profile | Galvanized Stainless | 2mm | |
| | | 2,5mm | |
| | | 3mm | |
| | | 4mm | |

| Description | Materiaial | Thickness |  |
|----------------------------|----------------------|-----------|---|
| 50x50 U Perforated Profile | Galvanized Stainless | 2mm | |
| | | 2,5mm | |
| | | 3mm | |
| | | 4mm | |


| Description | Materiaial | Thickness |  |
|----------------------------|----------------------|-----------|---|
| 41x21 G Perforated Profile | Galvanized Stainless | 1,5 - 2mm | |
| 41x41 G Perforated Profile | | 2 - 2,5mm | |
| 41x60 G Perforated Profile | | 2,5 - 3mm | |



DRILL SCREW NUTS BOLD


Self-Drilling Screw YBS

Secure fit and tight hold due to toothed undersideholder

|  | Description | Material | Packet |
|---|----------------------|------------|-----------|
| | Drill screw 3,9*13mm | Galvanized | 1.500 pcs |
| | Drill screw 3,9*16mm | Galvanized | 3.500 pcs |
| | Drill screw 3,9*19mm | Galvanized | 2.000 pcs |


Drill Screw With Hex Drive

Secure fit and tight hold due to toothed undersideholder

|  | Description | Material | Packet |
|--|---------------------------------|------------|-----------|
| | Drill screw 3,9*13mm, hex drive | Galvanized | 1.500 pcs |
| | Drill screw 3,9*16mm, hex drive | Galvanized | 3.500 pcs |
| | Drill screw 3,9*19mm, hex drive | Galvanized | 2.000 pcs |


Nut

- High strength steel product
- Secure fit and tight hold due to toothed undersideholder


|  | Description | Material | Packet |
|---|-------------|------------|-----------|
| | Nut M8 | Galvanized | 1.500 pcs |
| | Nut M10 | Galvanized | 3.500 pcs |
| | | | |

Bolt


- High strength steel product
- Secure fit and tight hold due to toothed undersideholder

|  | Description | Material | Packet |
|---|-------------|------------|-----------|
| | Bolt M8*25 | Galvanized | 1.500 pcs |
| | Bolt M10*30 | Galvanized | 3.500 pcs |
| | | | |


Extension Nuts

| Description | Material | Packet |  |
|----------------------|------------|---------|---|
| Extension Sleeve M8 | Galvanized | 500 pcs | |
| Extension Sleeve M10 | Galvanized | 500 pcs | |

Threaded Rod (Stem)


| Description | Material | Packet |  |
|-------------|------------|---------|---|
| Rod M8 | Galvanized | 500 pcs | |
| Rod M10 | Galvanized | 500 pcs | |

Washer

| Description | Material | Packet |  |
|-------------|------------|---------|---|
| Washer M8 | Galvanized | 500 pcs | |
| Washer M10 | Galvanized | 500 pcs | |


S Type Dowel

- High tensile strength
- Zinc plated against corrosion

| Description | Material | Packet |  |
|------------------|------------|---------|---|
| S Type Dowel M8 | Galvanized | 500 pcs | |
| S Type Dowel M10 | Galvanized | 500 pcs | |

Beam Clamp

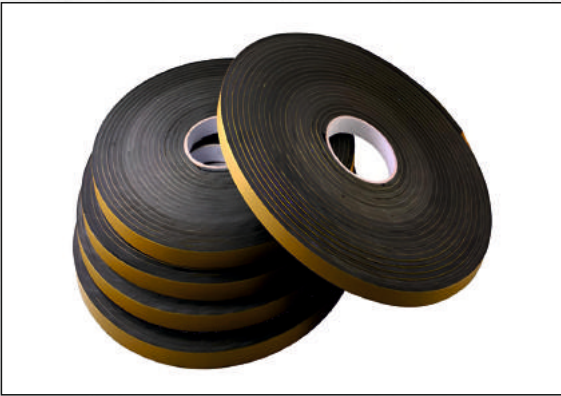
- For attaching ductwork or tubes to beam
- With hole or internal thread

| Description | Material | Hole | Packet |  |
|----------------|------------|------|--------|---|
| Beam Clamp M8 | Galvanized | M8 | 50 pcs | |
| Beam Clamp M10 | Galvanized | M10 | 50 pcs | |

GASKET TAPE

Gasket Tape

- Closed cell polyethylene foam
- Self-adhesive on one side
- Colour: anthracite grey
- Temperature resistance: -30°C to +80°C



| Description | Rolls | Packet | Pallet |
|---------------|-------|--------|---------|
| Gasket 5*13mm | 10m | 900m | 32.400m |
| Gasket 5*15mm | 10m | 800m | 25.600m |
| Gasket 5*20mm | 10m | 600m | 19.200m |
| Gasket 5*25mm | 10m | 500m | 16.000m |
| Gasket 5*30mm | 10m | 500m | 16.000m |

Rubet Tape



| Description | Rolls | Packet | Pallet |
|--------------------|-------|--------|---------|
| Rubber Tape 5 cm | 15m | 24 pcs | 768 pcs |
| Rubber Tape 7,5 cm | 15m | 14 pcs | 448 pcs |
| Rubber Tape 10 cm | 15m | 12 pcs | 384 pcs |
| Rubber Tape 15 cm | 15m | 10 pcs | 320 pcs |

Fireproof Asbestos



| Description | Rolls | Packet |
|---------------------------|-------|--------|
| Fire Proofasbestos 3*20mm | 30m | 10 pcs |
| Fire Proofasbestos 3*25mm | 30m | 10 pcs |
| Fire Proofasbestos 3*30mm | 30m | 10 pcs |

Pvc Tape

- Self-adhesive on one side
- High chemical and UV resistance
- Used for fixing surfaces such as glass, plastic and metal

| Description | Rolls | Packet |
|------------------|-------|--------|
| Pvc Tape 5cm | 15m | 48 pcs |
| Rubber Tape 10cm | 15m | 32 pcs |



Aluminum Foil Tape

- Self-adhesive on one side
- Flat and reinforced options, different thicknesses, hotmelt and acrylic adhesive
- Superior adhesion, thermal conductivity, heat and light reflection, UV resistance

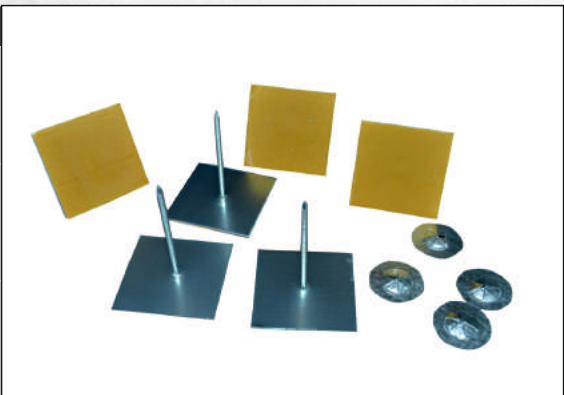
| Description | Rolls | Packet | Pallet |
|--------------------------|-------|--------|---------|
| Aluminum Foil Tape 5cm | 15m | 24 pcs | 768 pcs |
| Aluminum Foil Tape 7,5cm | 15m | 14 pcs | 448 pcs |
| Aluminum Foil Tape 10cm | 15m | 12 pcs | 384 pcs |



Self-stick Insulation Pins

- Galvanized Steel
- Firm conjunction between pins and bases
- Pins are soft, easy bending over
- Excellent stickness for double-sided adhesive property

| Description | Packet |
|----------------------------|-----------|
| Self-stick Insulation 4cm | 1.000 pcs |
| Self-stick Insulation 6cm | 500 pcs |
| Self-stick Insulation 10cm | 500 pcs |



AIR DUCT SEALANT- SILIKONES

- Designed for usage in ventilation systems
- Suitable for sealing ductwork and airhandling units

Acrylic Sealant (Mastic)

- One Component
- Easiy applicable by gun
- Forms a watertight film when cured
- Resistant to weather conditions
- Does not affect the surface being filled
- Temperature resistance: -10°C to +80°C
- Resistant to water, wing and humidity on aluminium, wood and PVC frames and windows



| Description | Quantity | Packet | Pallet |
|-----------------|----------|--------|----------|
| Acrylic Sealant | 310 ml | 24 pcs | 2400 pcs |

RTV High Temperature Silicone

RTV High Temperature Silicone, one-component, moisture-cure, acetoxo-based silicone.

- 100% Silicone polymer
- Colour : Red
- High strength
- Solvent free
- Compliant with ISO 11600 - F&G - 25 HM
- Resistant to UV rays
- Resistant up to between -45°C and +150°C



| Description | Quantity | Packet | Pallet |
|------------------------------|----------|--------|-----------|
| RTV High Temperatur Silicone | 310 ml | 20 pcs | 1.200 pcs |

PU 50 Pro Sealant

- One Component
- Easy to apply by gun
- Thixotropic
- Cured by atmospheric moisture
- Paintable, Volume stable
- Weather and waterproof
- Ever elastic
- Colours White, Black, Grey

| Description | Quantity | Packet | Pallet |
|-------------------|----------|--------|-----------|
| PU 50 Pro Sealant | 280 ml | 20 pcs | 2.000 pcs |



Multi Purpose Silicone

- Easy to apply
- Resistant to UV rays and elevated temperatures, colourfast.
- Excellent adhesion to non-porous surface
- Odour-neutral
- Temperature resistance 5°C to +400°C

| Description | Quantity | Packet | Pallet |
|------------------------|----------|--------|-----------|
| Multi Purpose Silicone | 250 ml | 20 pcs | 2.000 pcs |



FLEXIBLE DUCT

ALUMINUM

| | | | | | |
|--|--------------|-----------------|----------|----------|------------------------|
| | fiberwoll | fully laminated | hygienic | guard | flame retardant |
| | rubber | fully laminated | hygienic | guard | flame retardant |
| | polyethylene | fully laminated | hygienic | guard | |
| | insulated | ininsulated | sono | hygienic | guard |
| | insulated | ininsulated | sono | hygienic | guard |
| | insulated | ininsulated | sono | hygienic | guard flame retardant |
| | insulated | ininsulated | sono | hygienic | guard fireproof |
| | ininsulated | color options | | | |
| | insulated | ininsulated | sono | hygienic | guard economic |

PVC

| | | | |
|--|-----------|-------------|--------------------|
| | insulated | ininsulated | particle resistant |
| | insulated | ininsulated | particle resistant |
| | insulated | ininsulated | |
| | insulated | ininsulated | polypropylene |

ALUMINUM + PVC

| | | | | |
|--|-------------|------------------|-------|----------|
| | ininsulated | moisture barrier | guard | hygienic |
|--|-------------|------------------|-------|----------|

NON-WOVEN POLYPROPYLENE FABRIC CLOTH

| | | | |
|--|-----------|-------------|---------------|
| | insulated | ininsulated | polypropylene |
|--|-----------|-------------|---------------|



Globally Patented Products
International Certificates
Industry Leading Innovative Solutions
Professional Technical Team
Constant R&D Efforts

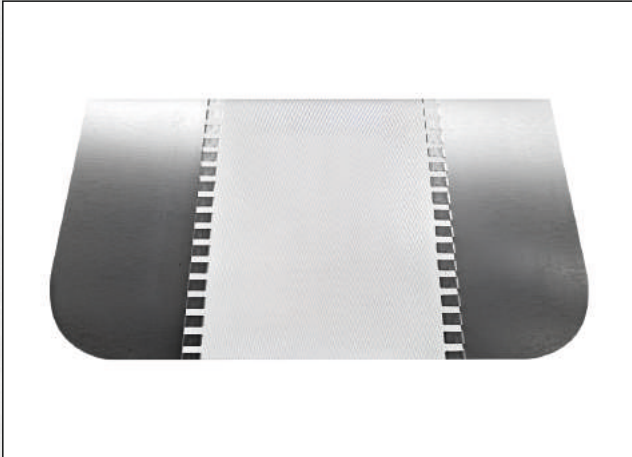


FLEXIBLE DUCT CONNECTOR

- For construction of Flexible connectors in HVAC-systems
- Avoids transfer of vibrations in ventilation systems
- Mounting recommendation available

Flexible connector - Silicone Fireproof

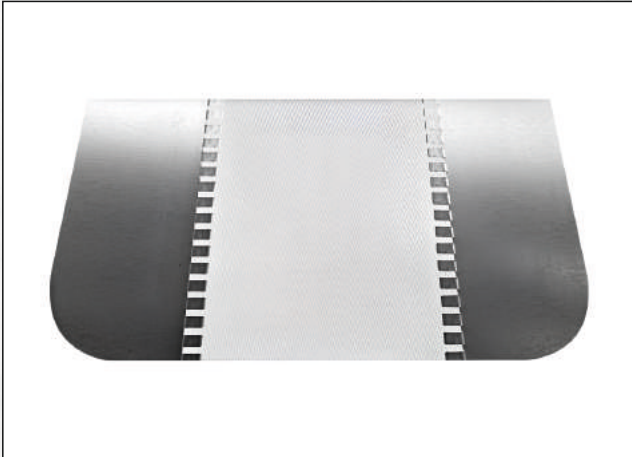
- Connector with fireproof and moisture-proof glass fiber woven canvas material, on the both side galvanized galvanized or stainless steel options for use in duct application
- Standard Length: 25M
- Sheet: Galvanise Stainless
- Temperature Resistance: -30°C to +260°C
- Fire Classification: Fireproof



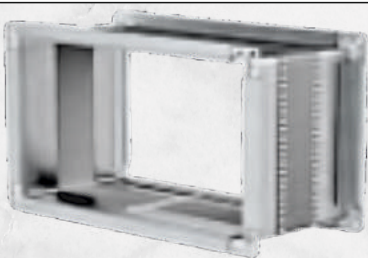
| Description | Sheet Metal | Packet |
|-------------|-------------|--------|
| 35x60x35 | Galvanized | 25 m |
| 45x60x45 | Galvanized | 25 m |
| 45x75x45 | Galvanized | 25 m |
| 70x100x70 | Galvanized | 25 m |
| 70x150x70 | Galvanized | 25 m |
| 45x60x45 | Stainless | 25 m |
| 70x100x70 | Stainless | 25 m |

Flexible connector - Silicone Fireproof

- Connector with PU material, on the both side galvanized galvanized or stainless steel options for use in duct application
- Standard Length: 25M
- Sheet: Galvanise Stainless
- Temperature Resistance: -30°C to +260°C
- Fire Classification: Fireproof



| Description | Sheet Metal | Packet |
|-------------|-------------|--------|
| 35x60x35 | Galvanized | 25 m |
| 45x60x45 | Galvanized | 25 m |
| 45x75x45 | Galvanized | 25 m |
| 70x100x70 | Galvanized | 25 m |
| 70x150x70 | Galvanized | 25 m |
| 45x60x45 | Stainless | 25 m |
| 70x100x70 | Stainless | 25 m |



FLEXIBLE DUCT CONNECTOR

- For construction of Flexible connectors in HVAC-Systems
- Avoids transfer of vibrations in ventilation systems
- Mounting recommendation available

Flexible connector - Polyester / PVC

- Connector with 750 denier Pvc material, on both side galvanized or stainless steel options for use in duct aplication
- Colour of fabric: Grey
- Standart Length: 25M
- Sheet: Galvanise Stainless
- Temperature Resistance: -30° C to +80° C
- Fire ClassiŞcation: Flame Retardant

| Description | Sheet Metal | Packet |
|-------------|-------------|--------|
| 35x60x35 | Galvanized | 25 m |
| 45x60x45 | Galvanized | 25 m |
| 45x75x45 | Galvanized | 25 m |
| 70x100x70 | Galvanized | 25 m |
| 70x150x70 | Galvanized | 25 m |
| 45x60x45 | Stainless | 25 m |
| 70x100x70 | Stainless | 25 m |



Flexible Connector - Canvas

- Connector with moisture-proof canvas weaving, galvanized or stainless steels options for use in duct application
- Standart Length: 25M
- Sheet: Galvanise Stainless
- Temperature Resistance: -30° C to +80° C

| Description | Sheet Metal | Packet |
|-------------|-------------|--------|
| 35x60x35 | Galvanized | 25 m |
| 45x60x45 | Galvanized | 25 m |
| 45x75x45 | Galvanized | 25 m |
| 70x100x70 | Galvanized | 25 m |
| 70x150x70 | Galvanized | 25 m |
| 45x60x45 | Stainless | 25 m |
| 70x100x70 | Stainless | 25 m |



ELASTOMERIC RUBBER FOAM

Elastomeric Rubber Foam Insulating Panel

- Wide range of production;
- Production in 7 different thicknesses, 2 different widths;
- It is produced in the most suitable dimensions (1000-1200 mm) for the insulation of channels.
- It reduces waste rate in rectangular channels.
- In circular section channels, it reduces the use of tape and saves total cost.
- Thanks to its flexible structure, it helps to reduce vibration at the channel connection points.
- Oneflex Formix® contact adhesive is suitable for bonding to the channel.

| Thickness (mm) | Panel Width (1000mm) m ² /Roll | Panel Width (1200 mm) m ² /Roll |
|----------------|---|--|
| 6 | 30 | 36 |
| 9 | 20 | 24 |
| 13 | 14 | 16,80 |
| 19 | 10 | 12 |
| 25 | 8 | 9,60 |
| 32 | 6 | 7,20 |
| 50 | 4 | 4,80 |



Self-Adhesive Mesh Elastomeric Rubber Foam

It saves application time and labor. It is self-adhesive. Provides complete sealing and eliminates labor defects.



Aluminum Foil Coated Elastomeric Rubber Foam Insulating Panels

Durable coating of aluminum and polyester lamination. Best performance with high quality raw material selection.



Aluminum Foil Coated Self Adhesive Elastomeric Rubber Foam

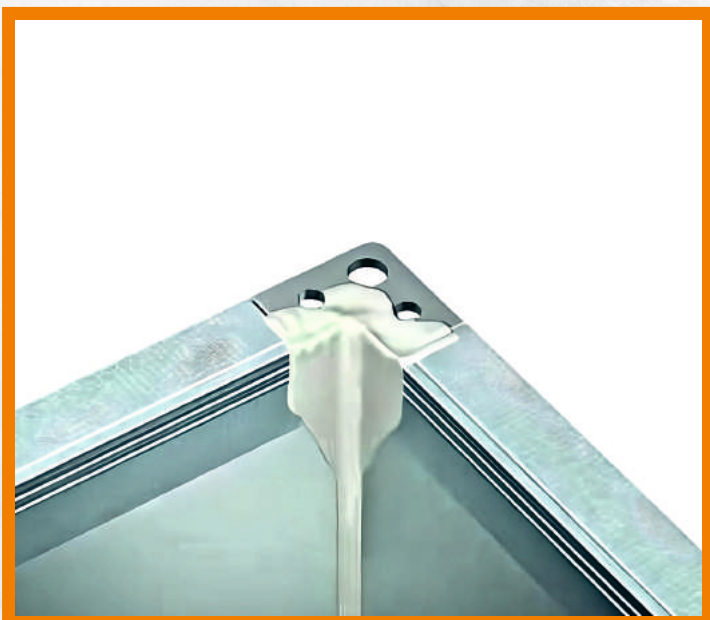
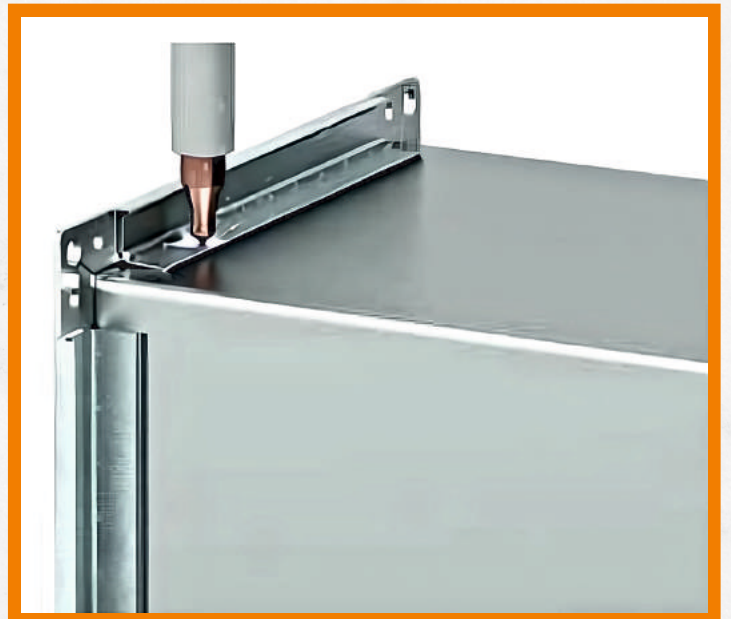
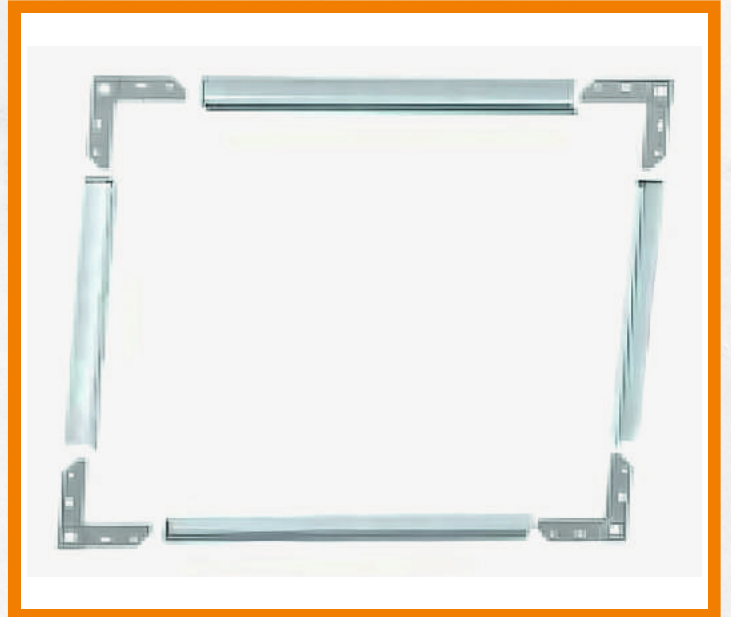
Aluminum and polyester lamination are durable coatings. It is packaged in durable packaging. It is self-adhesive.



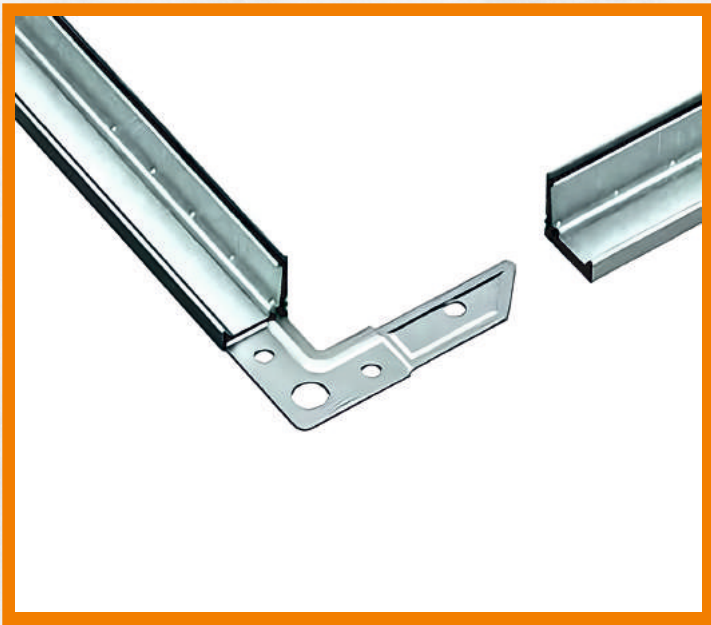
Elastomeric Rubber Foam Insulating Panels

260 µ thick reinforced surface on polyester layer with polyester and aluminum lamination, resistant to external conditions on PVC layer.

MOUNTING INSTRUCTION



MOUNTING INSTRUCTION



TENSILE AND CHEMICAL ANALYSIS TEST RESULTS



TSE DENey ve KALİBRASYON MERKEZİ BAŞKANLIĞI MAKİNE LABORATUVARI GEBZE MÜDÜRLÜĞÜ
HEADSHIP OF TSE TEST and CALIBRATION CENTER MECHANICS LABORATORY GEBZE DIRECTORATE

MUAYENE - DENey SONUÇLARI

TEST RESULTS

| |
|-----------|
| AB-0001-T |
| 386530 |
| 12-22 |

ÇEKME DENey SONUÇLARI/TENSILE TEST RESULTS

| Numune Sample | Çekme Dayanımı Tensile Strength R_m (N/mm ²) Std İstenen 270-500 Required In The Std. 270-500 | Akma Dayanımı Yield Strength $R_{p0.2}$ (N/mm ²) - | Kopma Uzunluğu Rupture Extension A (%) İstenen En az 22 Minimum Required By The Std. 22 | Değerlendirme Std. Evaluation Std | Sonuç Conclusion |
|--------------------------|---|--|---|--|---------------------|
| | Deney Sonucu Test Result | Deney Sonucu Test Result | Deney Sonucu Test Result | TS EN 10346 / 2015 | UYGUN PASS |
| KLVZ03, 07MM DX51D | 375 | 319 | 23 | | |

| DENeyE AİT BİLGİLER INFORMATION ABOUT THE TEST | | BOYUT ÖLÇÜM CİHAZI DIMENSION MEASUREMENT DEVICE | | DENeyE AİT BİLGİLER INFORMATION ABOUT THE TEST | |
|---|---|--|--|---|---|
| Adı Name | Çekme, Basma ve Yorulma Tensile, Pressure and Fatigue | Adı Name | Kumpas Caliper | Deney Tarihi Test Date | 15/11/2022 |
| Marka Trademark | <input type="checkbox"/> Instron 100kN Servohidrolik/ Instron 100kN Servohydraulic <input checked="" type="checkbox"/> Instron 600kN Elektromekanik/ Instron 600kN Electromechanics | Markası Trademark | <input checked="" type="checkbox"/> MITUTOYO 150 mm Dijital/ MITUTOYO 150 mm Digital | Uygulanan Standard Applied Standard | TS EN ISO 6892-1 |
| Kapasite Capacity | <input type="checkbox"/> Instron 1000kN Servohidrolik/ Instron 1000kN Servohydraulic | Kapasite Capacity | <input type="checkbox"/> MITUTOYO 200 mm Dijital/ MITUTOYO 200 mm Digital | Deney Metodu Test Method | A |
| Tip Type | <input type="checkbox"/> DMG 600kN Hidrolik/ DMG 600kN Hydraulic <input type="checkbox"/> DMG 2000kN Hidrolik/ DMG 2000kN Hydraulic | Tip Type | | Ortam Sıcaklığı Ambient Temperature | 23 °C |
| | | | | Operatör Operator | <input checked="" type="checkbox"/> Yusuf AMİL <input type="checkbox"/> Fatih CEYLAN <input type="checkbox"/> Mesut ZENGİNCE <input type="checkbox"/> M.Raif ÇELİKAL <input type="checkbox"/> Saide ÇIRAY |

KİMYASAL ANALİZ DENey SONUÇLARI/CHEMICAL ANALYSIS TEST RESULTS

| Numune Sample | % C (En Çok 0,18) (Most 0,18) | % Mn (En Çok 1,20) (Most 1,20) | % Si (En Çok 0,50) (Most 0,50) | Değerlendirme Std. Evaluation Std | Sonuç Conclusion |
|--------------------------|-------------------------------------|---------------------------------------|--------------------------------------|--|---------------------|
| KLVZ03, 07MM DX51D | 0,03 | 0,19 | 0,01 | TS EN 10346 / 2015 | UYGUN PASS |
| | % P (En Çok 0,12) (Most 0,12) | % S (En Çok 0,045) (Most 0,045) | % Ti (En Çok 0,30) (Most 0,30) | | |
| | 0,01 | 0,003 | 0,001 | | |

| DENey YAPILAN CİHAZIN THE TEST DEVICE'S | | DENeyE AİT BİLGİLER INFORMATION ABOUT THE TEST | |
|--|---|--|---|
| Adı Name | Optik Emisyon Spektrometresi Optical Emission Spectrometry | Numune Hazırlanış Şekli ve Yeri Style and Place of Preparation of Sample | Mak.Lab.Atl. |
| Markası Trademark | ARL | Deney Tarihi Test Date | 15/11/2022 |
| Demirbaş no Office stock number | 4460 | Uygulanan Standard Applied Standard | ASTM E 415 |
| Cihaz tipi Device type | OES | Ortam Sıcaklığı Ambient Temperature | 21 °C |
| Kapasite Capacity | - | Operatör Operator | <input type="checkbox"/> Mesut ZENGİNCE <input type="checkbox"/> M.Raif ÇELİKAL <input type="checkbox"/> Saide ÇIRAY <input type="checkbox"/> K.Yücel ÇONKAR <input checked="" type="checkbox"/> Samed Erdi Boran |

LAB-D-FR-36 / 11.06.2020-6

20.2



HVAC Connection Equipments

PRODUCT RANGE



SALES OFFICE

Kemal Türkler Mah. Uysal Cad. No:16
Sancaktepe / İSTANBUL
Tel: +90 216 329 55 89

FACTORY

Fatih Mah. Kılıçarslan Cad. No: 103/B
Sancaktepe / İSTANBUL
Tel: +90 216 329 55 90